



# OAKFIELD COURT

ADJIRIGANOR

"The days of acquiring a property just for shelter are long gone. It is now an investment. Thus, the major consideration should be value that lasts generations".



Within the core of one of Accra's most luxurious neighbourhoods lies an inimitable gated community with six cutting-edge townhouse units occupying a total land size of 19,800ft (1840 square meters). Oakfield Court is a stylish residential development located at Adjiriganor designed to meet the evolving needs of the modern family. This prime real estate is a minute drive away from the Islamic University, three minutes drive from one of Ghana's high-end communities; Trassaco Valley, and 5 minutes drive from the Ghana-Canada Hospital.

Each unit comes with four en-suite spacious bedrooms, a wide-open living and dining space, family area, and a fully fitted ultra-modern kitchen with a generous storage space.

Oakfield Court has an attached Facilities Management block. It also has two access points with dedicated security posts giving you the needed privacy and security.

Four of the units are semi-detached, and two are detached, all of which are enclosed with ample parking spaces and elaborate landscaping.

- Plot size 35ft x 70ft (approximately)
- Floor area of 200 square meters (approximately)
- 4 bedrooms
- 4.5 washrooms
- AC installed in living area and all bedrooms
- Powder coated aluminium sliding windows and doors with fly screen
- Fitted plaster board ceiling for all rooms
- Fully fitted kitchen cabinet
- Provision for a walk-in closet for master bedroom and wall mount wardrobe for other rooms.
- Elaborate external soft and hard landscape
- Installed secondary water storage systems
- Connection to electricity and water supply (national grid)
- Installed electric fencing
- Installed external CCTV system
- Provision for generator connection





PLOT SIZE : 90ft by 210ft

-  4 bedroom units
-  Spacious Car Park
-  Soft landscaping (greenery)
-  Serene environment

## OPT 1-DETACHED



Gross Area : 100m<sup>2</sup> /1076.39 ft<sup>2</sup>

- 1. Entrance Porch : 3msq.
- 2. Living area & Dining : 37msq.
- 3. Stairs : 7 msq.
- 4. Store :4msq.

- 5. Kitchen :13msq.
- 6. Bedroom 01 :14msq.
- 7. Washroom : 4msq.
- 8. Guest toilet : 2msq.



Gross Area : 100m<sup>2</sup> /1076.39 ft<sup>2</sup>

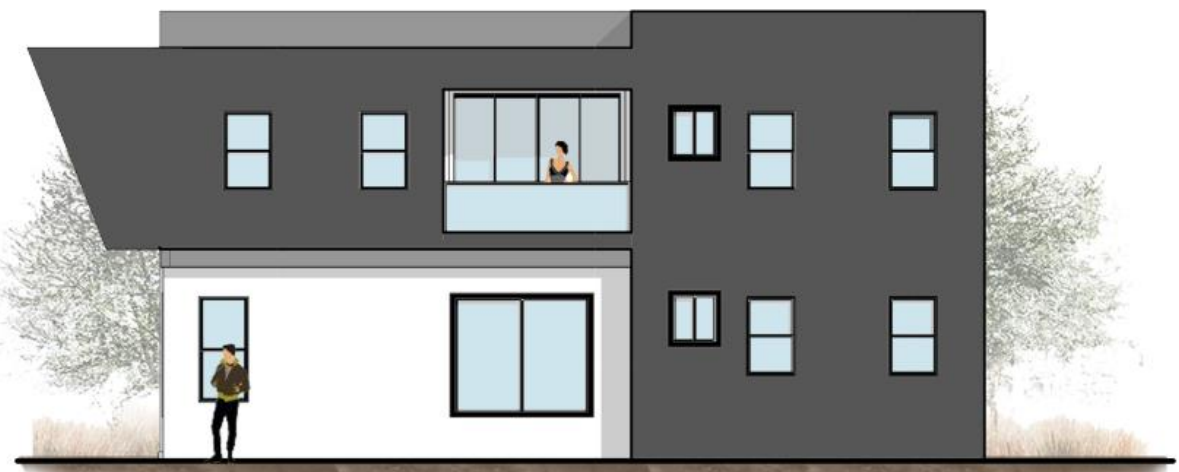
1. Family area : 16msq.  
 2. Washroom : 4msq.  
 3. Bedroom 02 : 14 msq.  
 4. Bedroom 03 : 15msq.

5. Washroom : 4msq.  
 6. Walk-in closet : 5msq.  
 7. Washroom : 5msq.  
 8. Master Bedroom : 20msq.

9. Balcony : 7msq.

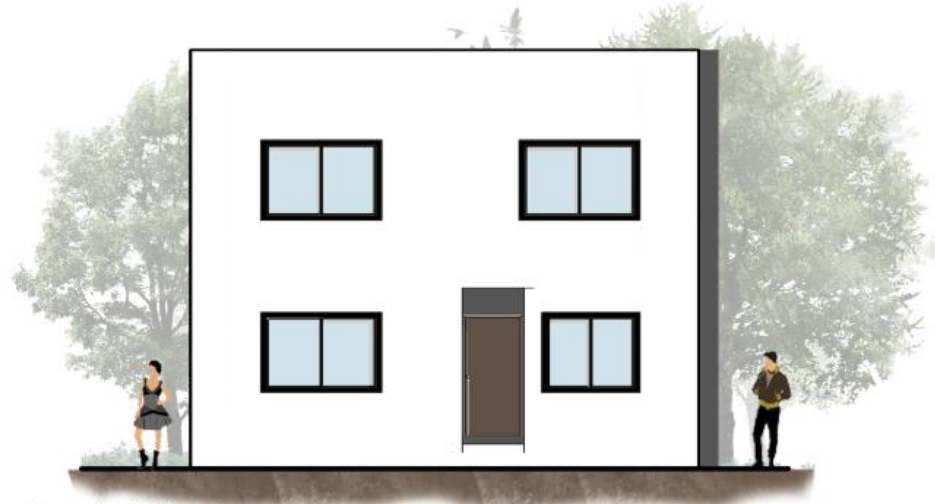


Front View

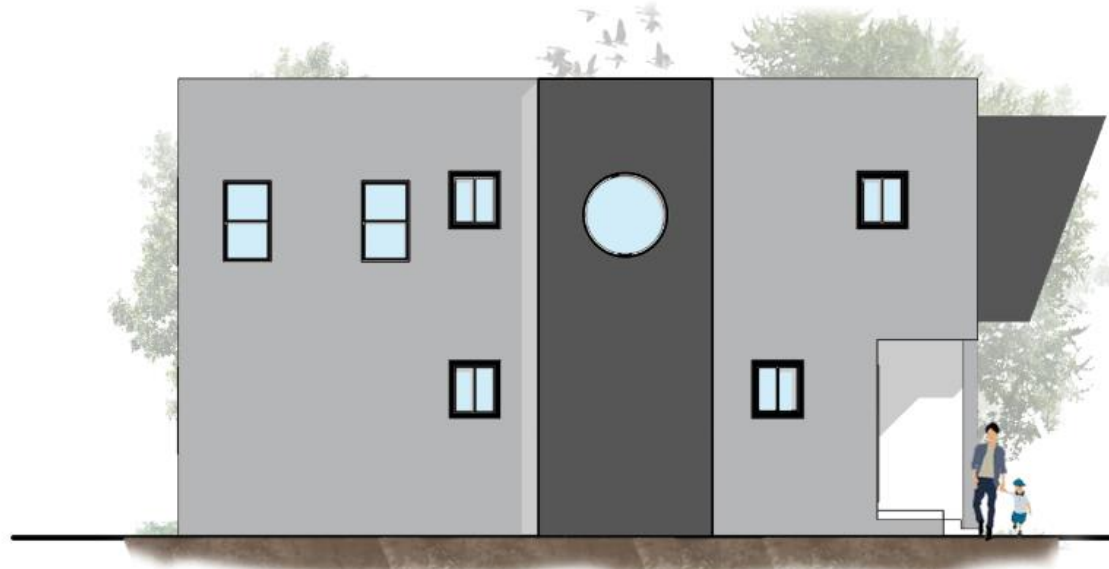


Left side View



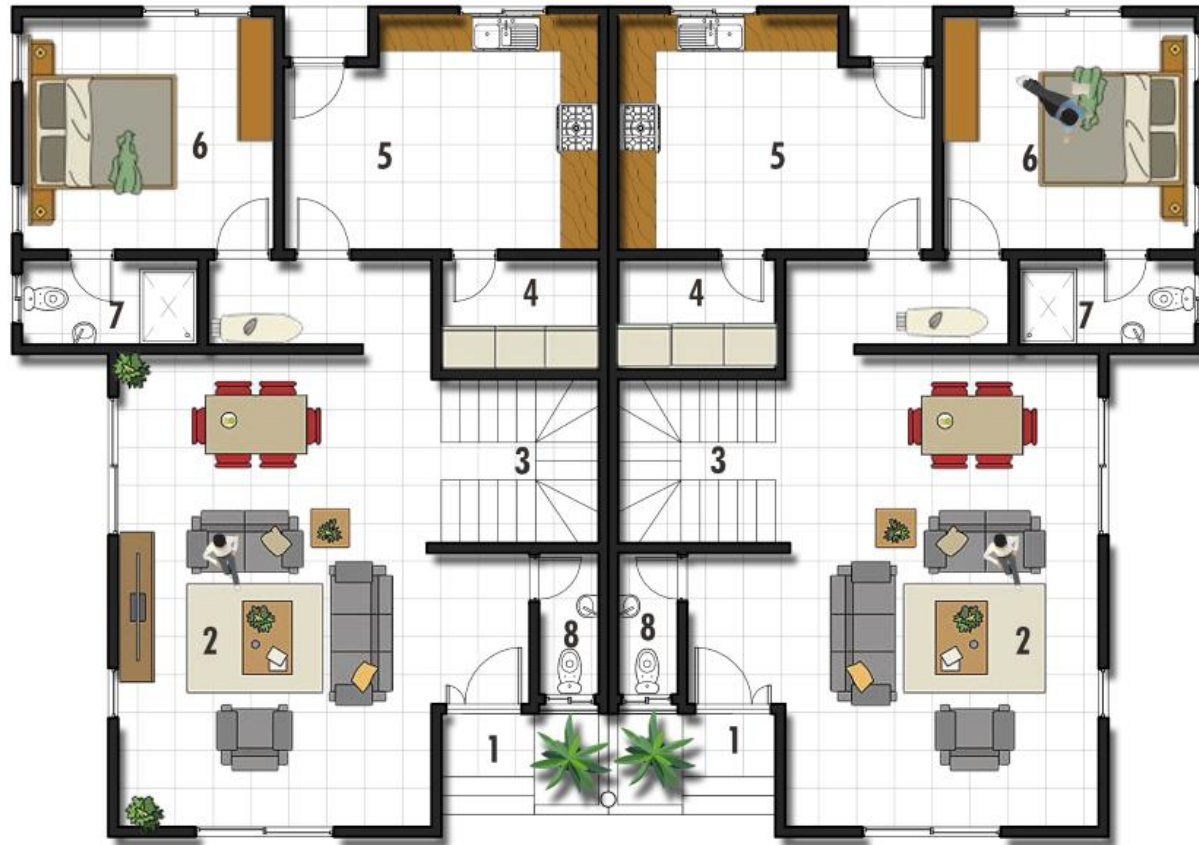


Back View



Right side View

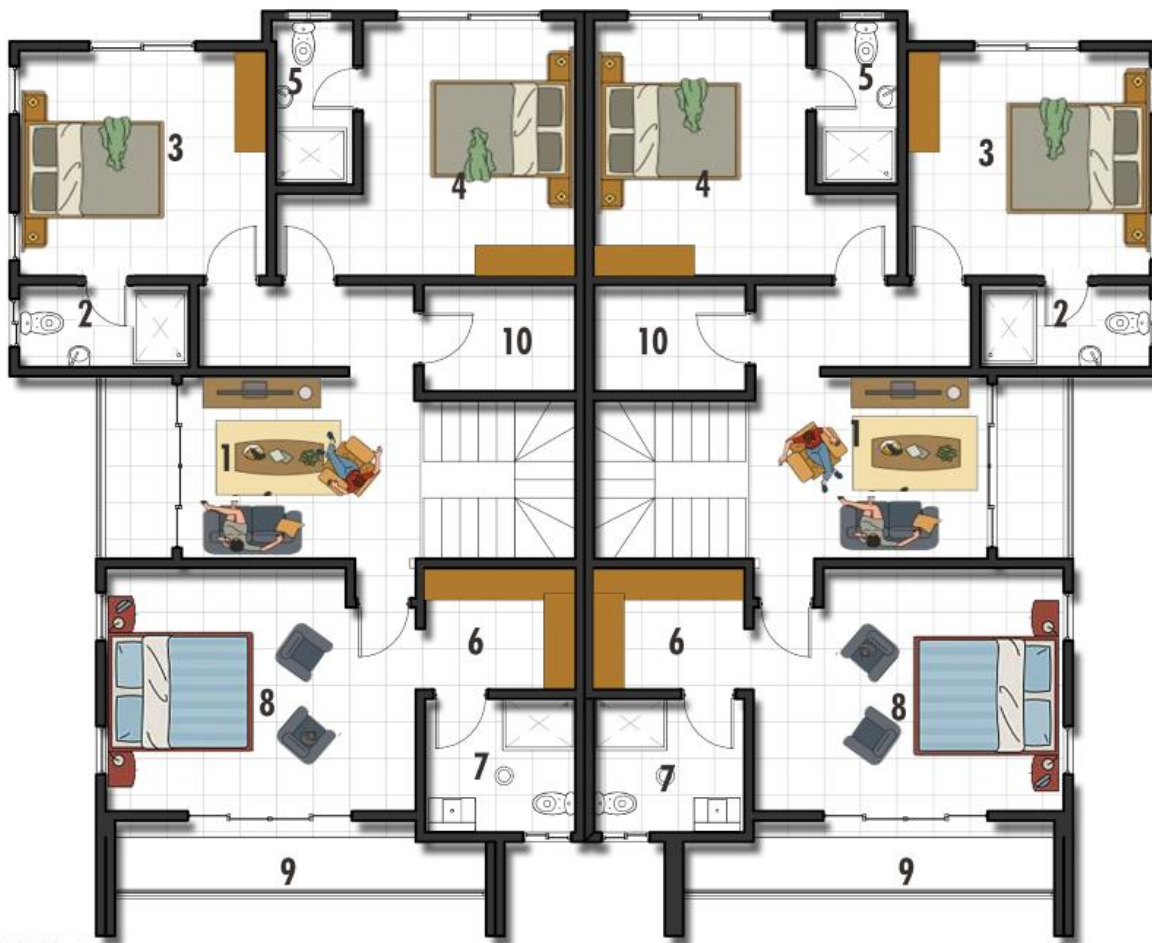
## **OPT 2- SEMI-DETACHED**



Gross Area : 100m<sup>2</sup> /1076.39 ft<sup>2</sup> PER UNIT

- 1. Entrance Porch : 3msq.
- 2. Living area & Dining : 37msq.
- 3. Stairs : 7 msq.
- 4. Store : 4msq.

- 5. Kitchen : 13msq.
- 6. Bedroom 01 : 14msq.
- 7. Washroom : 4msq.
- 8. Guest toilet : 2msq.



Gross Area : 110m2 /1184 ft2 PER UNIT

1. Family area : 16msq.  
 2. Washroom : 4msq.  
 3. Bedroom 02 : 14 msq.  
 4. Bedroom 03 : 15msq.

5. Washroom : 4msq.  
 6. Walk-in closet : 5msq.  
 7. Washroom : 5msq.  
 8. Master Bedroom : 20msq.

9. Balcony : 7msq.  
 10. Store : 4msq.



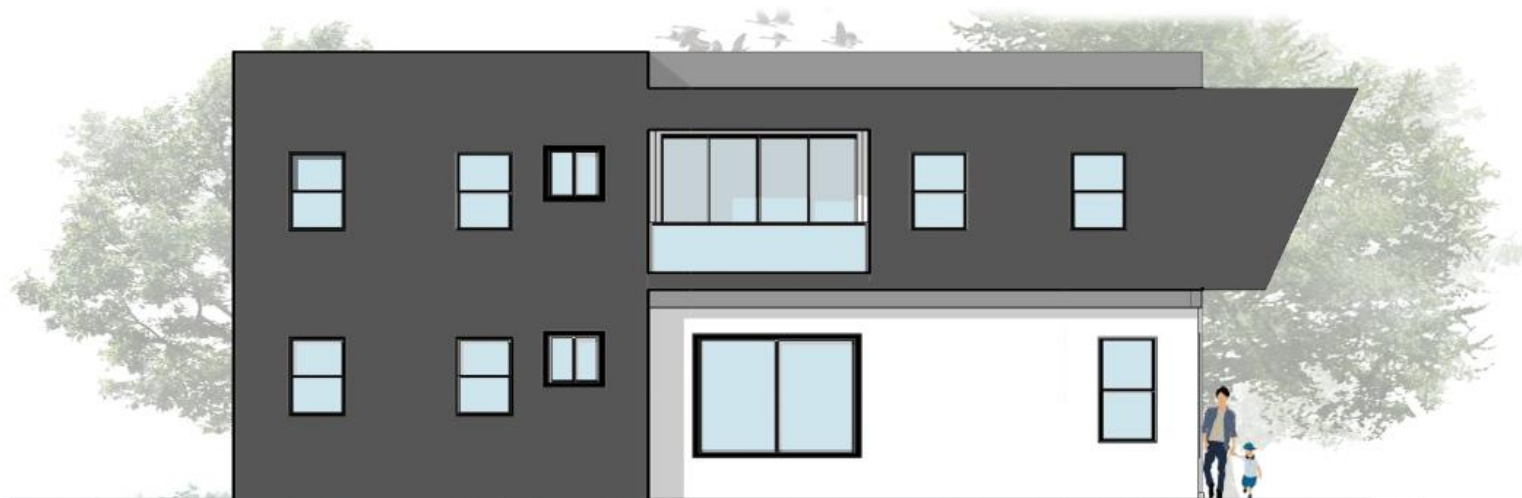
Front View



Left side View



Back View



Right side View









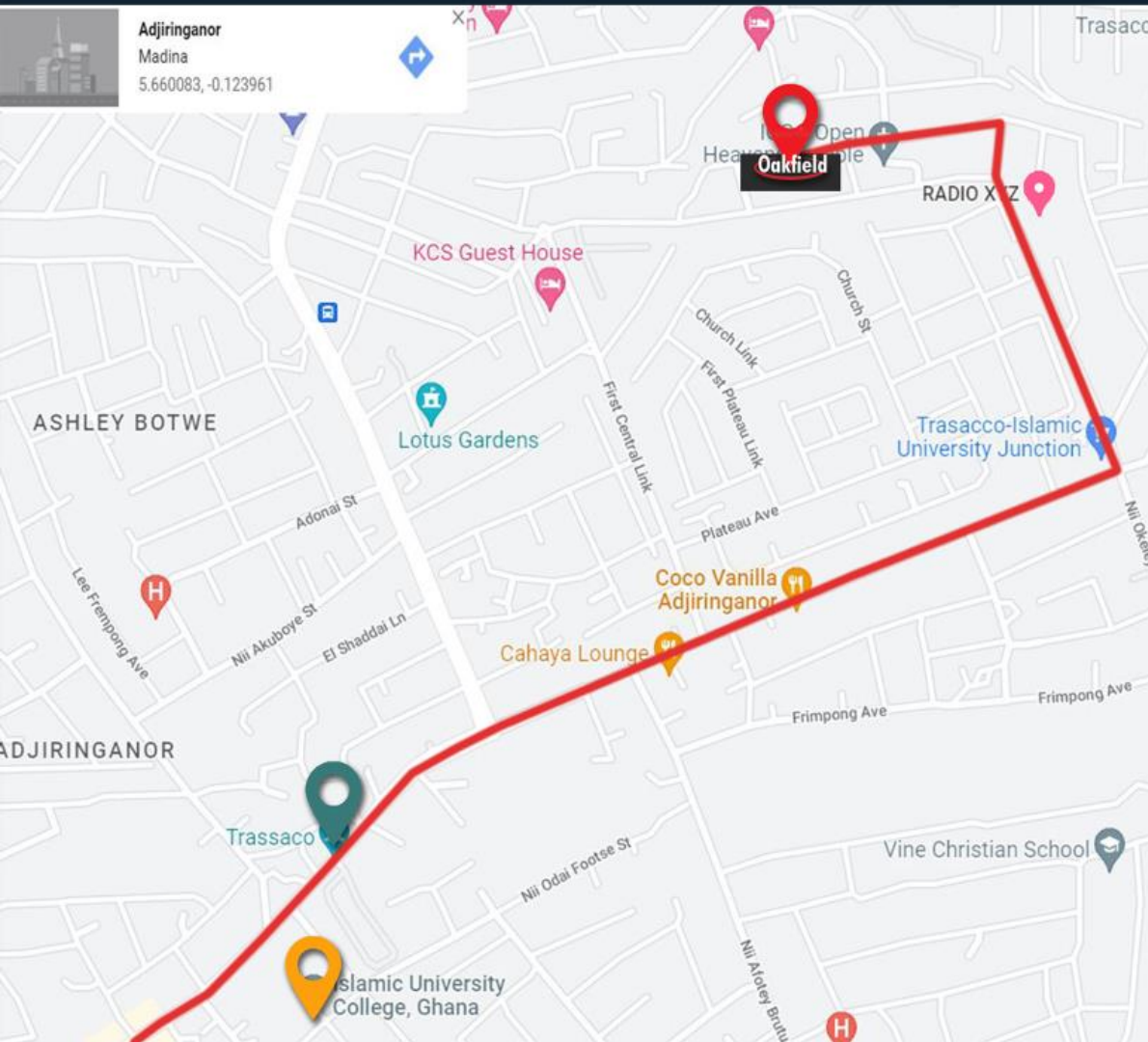












## Driving Distance from Oakfield Court to

- Islamic University -1 minute
- Trassaco Valley -3 minutes
- Ghana – Canada Hospital -5 minutes
- Galaxy International School-5 minutes
- Maxmart -3 minutes



• **Direct Payment to MultiSpace**

We have a flexible payment plan which is scheduled as follows.

Percentage	Development milestones
45%	initial payment
45%	payment after roofing
10%	final payment upon handing over

We are opened to discuss a suitable payment structure to match your cash flow

• **Mortgages**

We can recommend you to any of our mortgage partners who can assist in the payment on your behalf should you meet their terms and conditions.













MultiSpace Limited (a member of the MultiBuild group of companies), is a property development company delivering high value spaces which inspire, uplift, and offer the desired comfort and luxury.

We appreciate the insatiable feeling of family belongingness!

Value engineering sits in the centre of our design and construction process, and this identifies and eliminates avoidable costs and improves function and quality. We pay close attention to the environment and ensure that materials and fittings used are fit for purpose and sustainable. Our properties are unique, functional, and timeless.

 <p><b>FLORA DRIVE</b> AYIMENSAH</p>	 <p><b>LOTUS ROW</b> AYIMENSAH</p>	 <p><b>EAST GATE CLOSE</b> EAST LEGON</p>
<p><b>SOLD OUT</b></p>	<p><b>SOLD OUT</b></p>	<p><b>SOLD OUT</b></p>
 <p><b>PLATINUM PLACE</b> OYARIFA</p>	 <p><b>CACTUS ROW</b> OYARIFA</p>	 <p><b>OAKFIELD COURT</b> ADJIRIGANOR</p>
<p><b>COMING SOON</b></p>	<p><b>COMING SOON</b></p>	<p><b>COMING SOON</b></p>

**TALK TO US****[www.multispacegh.com](http://www.multispacegh.com)****[INFO@MULTISPACEGH.COM](mailto:INFO@MULTISPACEGH.COM)****+ 233 (0) 030 294 7859****+ 233 (0) 20 167 3666**

OFFICE LOCATION: House No. 32 Addis Abba Street, East Legon – Accra  
GA – 333 – 7431

 MULTISPACE GHANA LIMITED

 multispaceghana

 multispacegh/ Multispace ghana

DISCLAIMER: The information on this brochure is presented as general information and no representation or warranty is expressly or impliedly given as to its accuracy, completeness or correctness. The Company reserves the right to terminate, revoke, modify, alter, add and delete any one or more of the terms and conditions outlined in the brochure. The Company shall be under no obligation to notify the user of the amendment to the terms and conditions and the user shall be bound by such amended terms and conditions. Products, features, light fittings, pictures, images, etc. shown as illustrations are for reference only. The colours, shades of walls, tiles etc. shown in the images are for the purpose of representation only and may vary upon actual construction. All images, the interiors and furniture items displayed therein are to give a perspective to the user and are not part of the homes to be sold to the user. The user must verify all the details and specifications, including but not limited to the area, amenities, specifications, services, terms of sales, payments and all other relevant terms independently with our sales/marketing team prior to concluding any decision for buying any unit in any of our developments. By using or accessing the brochure, you agree with the Disclaimer without any qualification or limitation. While enough care is taken by the Company to ensure that information in the brochure are up to date, accurate and correct, the readers & users are requested to make their independent enquiry before relying upon the same.